

SOX2 Polyclonal Antibody

Catalog Number: E-AB-18159

1 Publications

 **DIA-AN**[®]
by Elabscience

Note: Centrifuge before opening to ensure complete recovery of vial contents.

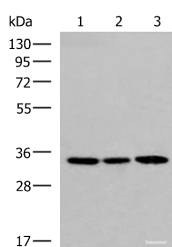
Description

Reactivity	Human, Mouse
Immunogen	Synthetic peptide of human SOX2
Host	Rabbit
Isotype	IgG
Purification	Antigen affinity purification
Conjugation	Unconjugated
Formulation	PBS with 0.05% NaN ₃ and 40% Glycerol, pH7.4

Applications Recommended Dilution

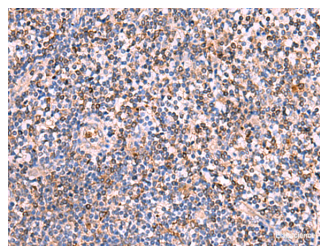
WB	1:1000-1:5000
IHC	1:30-1:150
ELISA	1:5000-1:10000

Data

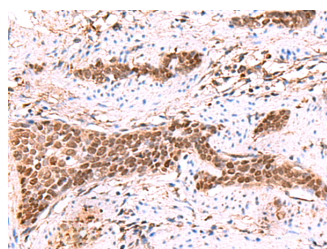


Western blot analysis of 293T and HepG2 cell lysates using SOX2 Polyclonal Antibody at dilution of 1:800

Observed Mw: Refer to figures
Calculated Mw: 34 kDa



Immunohistochemistry of paraffin-embedded Human tonsil tissue using SOX2 Polyclonal Antibody at dilution of 1:35 (×200)



Immunohistochemistry of paraffin-embedded Human esophagus cancer tissue using SOX2 Polyclonal Antibody at dilution of 1:35 (×200)

Preparation & Storage

Storage Store at -20°C. Avoid freeze / thaw cycles.

Background

Sox2, also known as SRY (sex determining region Y)-box 2, is a transcription factor essential for maintaining self-renewal

For Research Use Only

A Reliable Research Partner in Life Science and Medicine

Toll-free: 1-888-852-8623

Web: www.elabscience.com

Tel: 1-832-243-6086

Email: techsupport@elabscience.com

Fax: 1-832-243-6017

SOX2 Polyclonal Antibody

Catalog Number: E-AB-18159

1 Publications



of undifferentiated ES cells and is one of the key transcription factors used to reprogram mouse and human fibroblasts to a pluripotent state. Sox2 expressed in undifferentiated pluripotent stem cells and germ cells during development.

For Research Use Only

A Reliable Research Partner in Life Science and Medicine

Toll-free: 1-888-852-8623

Tel: 1-832-243-6086

Fax: 1-832-243-6017

Web: www.elabscience.com

Email: techsupport@elabscience.com