

KCNK15 Polyclonal Antibody

Catalog No. E-AB-18167

Note: Centrifuge before opening to ensure complete recovery of vial contents.

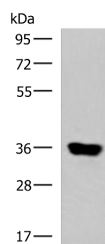
Description

Reactivity	Human
Immunogen	Synthetic peptide of human KCNK15
Host	Rabbit
Isotype	IgG
Purification	Antigen affinity purification
Conjugation	Unconjugated
Buffer	PBS with 0.05% NaN ₃ and 40% Glycerol, pH7.4

Applications Recommended Dilution

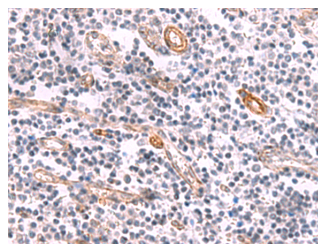
WB	1:1000-1:5000
IHC	1:25-1:100

Data



Western blot analysis of Human muscle tissue lysate using KCNK15 Polyclonal Antibody at dilution of 1:1000

Observed Mw: Refer to figures
Calculated Mw: 36 kDa



Immunohistochemistry of paraffin-embedded Human tonsil tissue using KCNK15 Polyclonal Antibody at dilution of 1:45 (x200)

Preparation & Storage

Storage Store at -20°C. Avoid freeze / thaw cycles.

Background

This gene encodes one of the members of the superfamily of potassium channel proteins containing two pore-forming P domains. The product of this gene has not been shown to be a functional channel, however, it may require other non-pore-forming proteins for activity. KCNK15 (Potassium Two Pore Domain Channel Subfamily K Member 15) is a Protein Coding gene. Among its related pathways are Neuropathic Pain-Signaling in Dorsal Horn Neurons and Sweet Taste Signaling. GO annotations related to this gene include potassium channel activity and potassium ion leak channel activity. An important paralog of this gene is KCNK9.

For Research Use Only