

KCNN2 Polyclonal Antibody

Catalog No. E-AB-18171

Note: Centrifuge before opening to ensure complete recovery of vial contents.

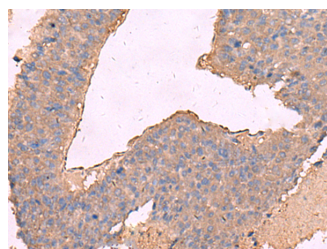
Description

Reactivity	Human, Mouse, Rat
Immunogen	Synthetic peptide of human KCNN2
Host	Rabbit
Isotype	IgG
Purification	Antigen affinity purification
Conjugation	Unconjugated
Buffer	PBS with 0.05% NaN ₃ and 40% Glycerol, pH7.4

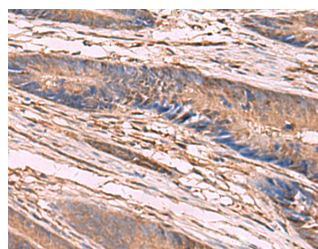
Applications Recommended Dilution

IHC 1:50-1:300

Data



Immunohistochemistry of paraffin-embedded Human liver cancer tissue using KCNN2 Polyclonal Antibody at dilution of 1:65 (x200)



Immunohistochemistry of paraffin-embedded Human colorectal cancer tissue using KCNN2 Polyclonal Antibody at dilution of 1:65 (x200)

Preparation & Storage

Storage Store at -20°C. Avoid freeze / thaw cycles.

Background

Action potentials in vertebrate neurons are followed by an afterhyperpolarization (AHP) that may persist for several seconds and may have profound consequences for the firing pattern of the neuron. Each component of the AHP is kinetically distinct and is mediated by different calcium-activated potassium channels. The protein encoded by this gene is activated before membrane hyperpolarization and is thought to regulate neuronal excitability by contributing to the slow component of synaptic AHP. This gene is a member of the KCNN family of potassium channel genes. The encoded protein is an integral membrane protein that forms a voltage-independent calcium-activated channel with three other calmodulin-binding subunits. Alternate splicing of this gene results in multiple transcript variants. KCNN2 (Potassium Calcium-Activated Channel Subfamily N Member 2) is a Protein Coding gene. Among its related pathways are Serotonergic synapse and Bile secretion. GO annotations related to this gene include protein homodimerization activity and ion channel activity. An important paralog of this gene is KCNN3.

For Research Use Only