

KRT36 Polyclonal Antibody

Catalog No. E-AB-18180

Note: Centrifuge before opening to ensure complete recovery of vial contents.

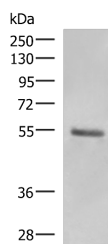
Description

Reactivity	Human
Immunogen	Synthetic peptide of human KRT36
Host	Rabbit
Isotype	IgG
Purification	Antigen affinity purification
Conjugation	Unconjugated
Buffer	PBS with 0.05% NaN ₃ and 40% Glycerol,pH7.4

Applications Recommended Dilution

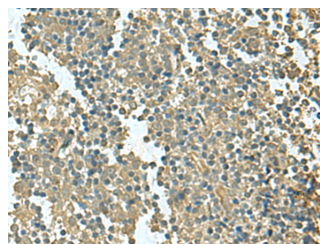
WB	1:500-1:2000
IHC	1:50-1:300

Data

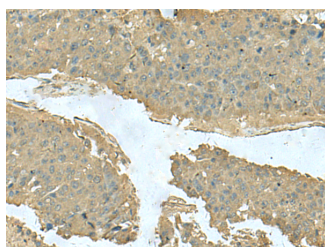


Western blot analysis of Human skin tissue lysate using KRT36 Polyclonal Antibody at dilution of 1:1000

Observed Mw:Refer to figures
Calculated Mw:52 kDa



Immunohistochemistry of paraffin-embedded Human tonsil tissue using KRT36 Polyclonal Antibody at dilution of 1:50(×200)



Immunohistochemistry of paraffin-embedded Human liver cancer tissue using KRT36 Polyclonal Antibody at dilution of 1:50(×200)

Preparation & Storage

For Research Use Only

Storage Store at -20°C. Avoid freeze / thaw cycles.

Background

The protein encoded by this gene is a member of the keratin gene family. This type I hair keratin is an acidic protein which heterodimerizes with type II keratins to form hair and nails. The type I hair keratins are clustered in a region of chromosome 17q12-q21 and have the same direction of transcription.

For Research Use Only