

## PUM3 Polyclonal Antibody

**Catalog No.** E-AB-18185

*Note:* Centrifuge before opening to ensure complete recovery of vial contents.

### Description

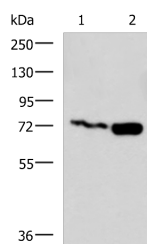
<b>Reactivity</b>	Human
<b>Immunogen</b>	Synthetic peptide of human PUM3
<b>Host</b>	Rabbit
<b>Isotype</b>	IgG
<b>Purification</b>	Antigen affinity purification
<b>Conjugation</b>	Unconjugated
<b>Buffer</b>	PBS with 0.05% NaN <sub>3</sub> and 40% Glycerol,pH7.4

### Applications

### Recommended Dilution

**WB** 1:1000-1:5000

### Data



Western blot analysis of Jurkat and Raji cell lysates using PUM3 Polyclonal Antibody at dilution of 1:800

**Observed Mw:Refer to figures**

**Calculated Mw:74 kDa**

### Preparation & Storage

**Storage** Store at -20°C. Avoid freeze / thaw cycles.

### Background

Inhibits the poly(ADP-ribosyl)ation activity of PARP1 and the degradation of PARP1 by CASP3 following genotoxic stress. Binds to double-stranded RNA or DNA without sequence specificity. Involved in development of the eye and of primordial germ cells.

### For Research Use Only