

## HMOX1 Polyclonal Antibody

Catalog No. E-AB-18231

**Note:** Centrifuge before opening to ensure complete recovery of vial contents.

### Description

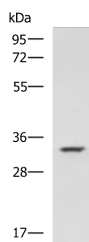
<b>Reactivity</b>	Human, Mouse, Rat
<b>Immunogen</b>	Fusion protein of human HMOX1
<b>Host</b>	Rabbit
<b>Isotype</b>	IgG
<b>Purification</b>	Antigen affinity purification
<b>Conjugation</b>	Unconjugated
<b>Buffer</b>	PBS with 0.05% NaN <sub>3</sub> and 40% Glycerol, pH7.4

### Applications

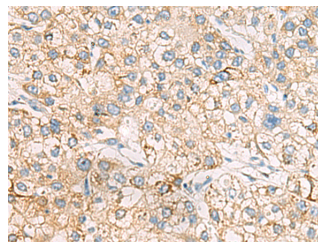
### Recommended Dilution

**WB 1:500-1:2000,**  
**IHC 1:50-1:200,**  
**ELISA**  
**1:5000-1:10000**

### Data



Western blot analysis of A549 cell lysate using HMOX1 Polyclonal Antibody at dilution of 1:800  
**Observed Mw:Refer to figures**  
**Calculated Mw:33 kDa**



Immunohistochemistry of paraffin-embedded Human liver cancer tissue using HMOX1 Polyclonal Antibody at dilution of 1:70(×200)

### Preparation & Storage

**Storage** Store at -20°C. Avoid freeze / thaw cycles.

### Background

Heme oxygenase, an essential enzyme in heme catabolism, cleaves heme to form biliverdin, which is subsequently converted to bilirubin by biliverdin reductase, and carbon monoxide, a putative neurotransmitter. Heme oxygenase activity is induced by its substrate heme and by various nonheme substances. Heme oxygenase occurs as 2 isozymes, an inducible heme oxygenase-1 and a constitutive heme oxygenase-2. HMOX1 and HMOX2 belong to the heme oxygenase family.

### For Research Use Only