

MCM9 Polyclonal Antibody

Catalog Number:E-AB-18239



Note: Centrifuge before opening to ensure complete recovery of vial contents.

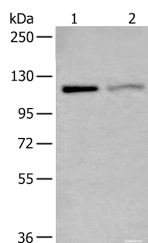
Description

Reactivity	Human, Mouse, Rat
Immunogen	Fusion protein of human MCM9
Host	Rabbit
Isotype	IgG
Purification	Antigen affinity purification
Conjugation	Unconjugated
Formulation	PBS with 0.05% NaN ₃ and 40% Glycerol,pH7.4

Applications Recommended Dilution

WB	1:500-1:2000
ELISA	1:2000-1:5000

Data



Western blot analysis of K562 and 231 cell lysates
using MCM9 Polyclonal Antibody at dilution of 1:800

Observed Mw:Refer to figures

Calculated Mw:127 kDa

Preparation & Storage

Storage Store at -20°C. Avoid freeze / thaw cycles.

Background

The protein encoded by this gene is a member of the mini-chromosome maintenance (MCM) protein family that are essential for the initiation of eukaryotic genome replication. Binding of this protein to chromatin has been shown to be a pre-requisite for recruiting the MCM2-7 helicase to DNA replication origins. This protein also binds, and is a positive regulator of, the chromatin licensing and DNA replication factor 1, CDT1.

For Research Use Only

A Reliable Research Partner in Life Science and Medicine

Toll-free: 1-888-852-8623

Web: www.elabscience.com

Tel: 1-832-243-6086

Email: techsupport@elabscience.com

Fax: 1-832-243-6017