

## RERG Polyclonal Antibody

**Catalog No.** E-AB-18283

*Note:* Centrifuge before opening to ensure complete recovery of vial contents.

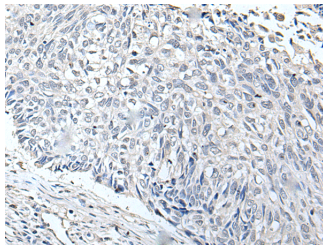
### Description

<b>Reactivity</b>	Human, Mouse
<b>Immunogen</b>	Full length fusion protein
<b>Host</b>	Rabbit
<b>Isotype</b>	IgG
<b>Purification</b>	Antigen affinity purification
<b>Conjugation</b>	Unconjugated
<b>Buffer</b>	PBS with 0.05% NaN <sub>3</sub> and 40% Glycerol,pH7.4

### Applications Recommended Dilution

<b>IHC</b>	1:50-1:350
------------	------------

### Data



Immunohistochemistry of paraffin-embedded Human lung cancer tissue using RERG Polyclonal Antibody at dilution of 1:65(×200)

### Preparation & Storage

**Storage** Store at -20°C. Avoid freeze / thaw cycles.

### Background

RERG, a member of the RAS superfamily of GTPases, inhibits cell proliferation and tumor formation

### For Research Use Only