

HELLS Polyclonal Antibody

Catalog No. E-AB-18290

Note: Centrifuge before opening to ensure complete recovery of vial contents.

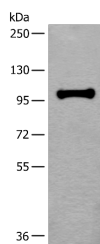
Description

Reactivity	Human, Mouse
Immunogen	Fusion protein of human HELLS
Host	Rabbit
Isotype	IgG
Purification	Antigen affinity purification
Conjugation	Unconjugated
Buffer	PBS with 0.05% NaN ₃ and 40% Glycerol, pH7.4

Applications Recommended Dilution

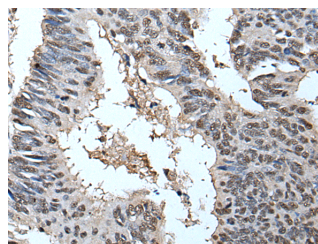
WB	1:500-1:2000
IHC	1:25-1:100

Data

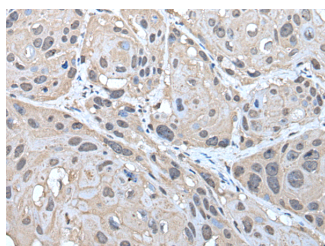


Western blot analysis of HEPG2 cell lysate using HELLS Polyclonal Antibody at dilution of 1:400

Observed Mw: Refer to figures
Calculated Mw: 97 kDa



Immunohistochemistry of paraffin-embedded Human colorectal cancer tissue using HELLS Polyclonal Antibody at dilution of 1:30(×200)



Immunohistochemistry of paraffin-embedded Human esophagus cancer tissue using HELLS Polyclonal Antibody at dilution of 1:30(×200)

Preparation & Storage

Storage Store at -20°C. Avoid freeze / thaw cycles.

For Research Use Only

Background

This gene encodes a lymphoid-specific helicase. Other helicases function in processes involving DNA strand separation, including replication, repair, recombination, and transcription. This protein is thought to be involved with cellular proliferation and may play a role in leukemogenesis. Alternatively spliced transcript variants encoding different isoforms have been identified.