

## STK16 Polyclonal Antibody

**Catalog No.** E-AB-18292

*Note:* Centrifuge before opening to ensure complete recovery of vial contents.

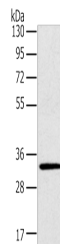
### Description

<b>Reactivity</b>	Human, Mouse, Rat
<b>Immunogen</b>	Fusion protein of human STK16
<b>Host</b>	Rabbit
<b>Isotype</b>	IgG
<b>Purification</b>	Antigen affinity purification
<b>Conjugation</b>	Unconjugated
<b>Buffer</b>	PBS with 0.05% NaN <sub>3</sub> and 40% Glycerol, pH7.4

### Applications Recommended Dilution

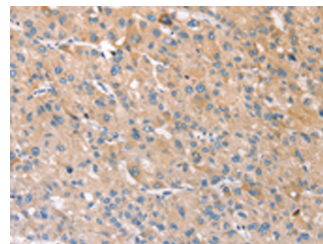
<b>WB</b>	1:500-1:2000
<b>IHC</b>	1:25-1:100

### Data

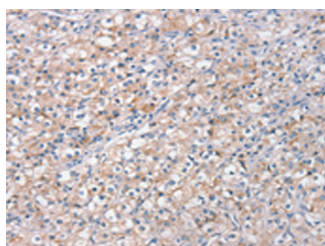


Western blot analysis of Mouse brain tissue using STK16 Polyclonal Antibody at dilution of 1:400

**Observed Mw: Refer to figures**  
**Calculated Mw: 35 kDa**



Immunohistochemistry of paraffin-embedded Human liver cancer tissue using STK16 Polyclonal Antibody at dilution of 1:30 (x200)



Immunohistochemistry of paraffin-embedded Human prostate cancer tissue using STK16 Polyclonal Antibody at dilution of 1:30 (x200)

### Preparation & Storage

**Storage** Store at -20°C. Avoid freeze / thaw cycles.

### For Research Use Only

## Background

STK16 (serine/threonine kinase 16), also known as KRCT, MPSK, TSF1 or PKL12, is a 305 amino acid lipid-anchored membrane protein that belongs to the superfamily of serine/threonine protein kinases. Expressed ubiquitously at low levels, STK16 is a protein kinase that can catalytically phosphorylate both serine and threonine resi