

UBLCP1 Polyclonal Antibody

Catalog No. E-AB-18300

Note: Centrifuge before opening to ensure complete recovery of vial contents.

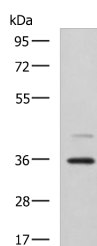
Description

Reactivity	Human, Mouse, Rat
Immunogen	Fusion protein of human UBLCP1
Host	Rabbit
Isotype	IgG
Purification	Antigen affinity purification
Conjugation	Unconjugated
Buffer	PBS with 0.05% NaN ₃ and 40% Glycerol, pH7.4

Applications Recommended Dilution

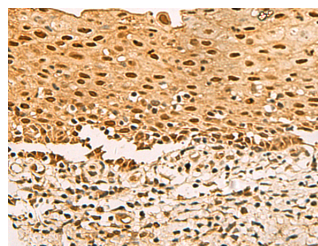
WB	1:1000-1:5000
IHC	1:100-1:200

Data



Western blot analysis of A172 cell lysate using UBLCP1 Polyclonal Antibody at dilution of 1:1150

Observed Mw: Refer to figures
Calculated Mw: 37 kDa



Immunohistochemistry of paraffin-embedded Human cervical cancer tissue using UBLCP1 Polyclonal Antibody at dilution of 1:80 (×200)

Preparation & Storage

Storage Store at -20°C. Avoid freeze / thaw cycles.

Background

Dephosphorylates 26S nuclear proteasomes, thereby decreasing their proteolytic activity. The dephosphorylation may prevent assembly of the core and regulatory particles (CP and RP) into mature 26S proteasome.

For Research Use Only