

Phospho-CHEK2 (Ser516) Polyclonal Antibody

Catalog No. E-AB-20842

Note: Centrifuge before opening to ensure complete recovery of vial contents.

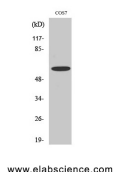
Description

Reactivity	Human,Monkey
Immunogen	Synthesized peptide derived from human Chk2 around the phosphorylation site of Ser516
Host	Rabbit
Isotype	IgG
Purification	Affinity purification
Conjugation	Unconjugated
Buffer	PBS with 0.02% sodium azide, 0.5% protective protein and 50% glycerol, pH7.4

Applications Recommended Dilution

WB	1:500-1:2000
ELISA	1:10000

Data



Western Blot analysis of COS7 cells with Phospho-CHEK2 (Ser516) Polyclonal Antibody
Observed Mw:61kDa
Calculated Mw:61kDa

Preparation & Storage

Storage Store at -20°C. Avoid freeze / thaw cycles.

Background

Regulates cell cycle checkpoints and apoptosis in response to DNA damage, particularly to DNA double-strand breaks. Inhibits CDC25C phosphatase by phosphorylation on 'Ser-216', preventing the entry into mitosis. May also play a role in meiosis. Regulates the TP53 tumor suppressor through phosphorylation at 'Thr-18' and 'Ser-20'.

For Research Use Only