

DCAF7 Polyclonal Antibody

Catalog Number:E-AB-18310



Note: Centrifuge before opening to ensure complete recovery of vial contents.

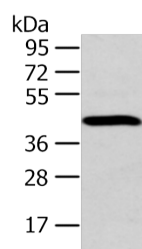
Description

Reactivity	Human, Mouse
Immunogen	Fusion protein of human DCAF7
Host	Rabbit
Isotype	IgG
Purification	Antigen affinity purification
Conjugation	Unconjugated
Formulation	PBS with 0.05% NaN ₃ and 40% Glycerol,pH7.4

Applications Recommended Dilution

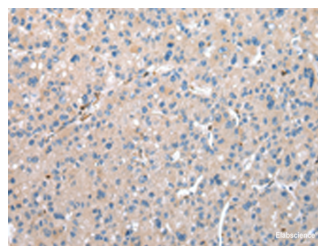
WB	1:500-1:2000
IHC	1:25-1:100
ELISA	1:2000-1:5000

Data

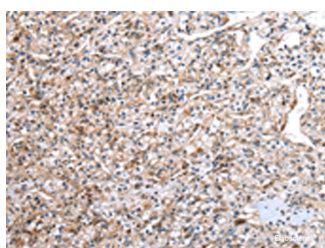


Western blot analysis of Human fetal brain tissue using DCAF7 Polyclonal Antibody at dilution of 1:300

Observed Mw:Refer to figures
Calculated Mw:39 kDa



Immunohistochemistry of paraffin-embedded Human liver cancer tissue using DCAF7 Polyclonal Antibody at dilution of 1:30(×200)



Immunohistochemistry of paraffin-embedded Human prostate cancer tissue using DCAF7 Polyclonal Antibody at dilution of 1:30(×200)

Preparation & Storage

Storage Store at -20°C. Avoid freeze / thaw cycles.

Background

For Research Use Only

A Reliable Research Partner in Life Science and Medicine

Toll-free: 1-888-852-8623

Web: www.elabscience.com

Tel: 1-832-243-6086

Email: techsupport@elabscience.com

Fax: 1-832-243-6017

DCAF7 Polyclonal Antibody

Catalog Number:E-AB-18310



This gene encodes a protein with multiple WD40 repeats which facilitate protein-protein interactions and thereby enable the assembly of multiprotein complexes. This protein has been shown to function as a scaffold protein for protein complexes involved in kinase signaling. This highly conserved gene is present in eukaryotic plants, fungi, and animals. The ortholog of this gene was first identified in plants as a key regulator of anthocyanin biosynthesis and flower pigmentation.

For Research Use Only

A Reliable Research Partner in Life Science and Medicine

Toll-free: 1-888-852-8623

Web: www.elabscience.com

Tel: 1-832-243-6086

Email: techsupport@elabscience.com

Fax: 1-832-243-6017