

Phospho-CREB1 (Ser133) Polyclonal Antibody

Catalog Number: E-AB-20849

1 Publications



Note: Centrifuge before opening to ensure complete recovery of vial contents.

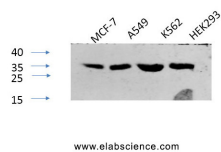
Description

Reactivity	Human, Mouse, Rat
Immunogen	Synthesized peptide derived from human CREB-1 around the phosphorylation site of Ser133
Host	Rabbit
Isotype	IgG
Purification	Affinity purification
Conjugation	Unconjugated
Formulation	PBS with 0.02% sodium azide, 0.5% protective protein and 50% glycerol, pH7.4

Applications Recommended Dilution

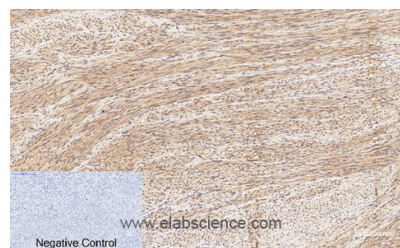
WB	1:500-1:2000
IHC	1:100-1:300
IF	1:100-1:300
ELISA	1:5000-1:20000

Data

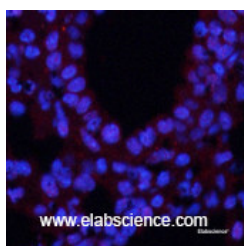


Western Blot analysis of various cells using Phospho-CREB1 (Ser133) Polyclonal Antibody at dilution of 1:1000

Observed Mw: 37kDa
Calculated Mw: 37kDa



Immunohistochemistry of paraffin-embedded Human uterus tissue using Phospho-CREB1 (Ser133) Polyclonal Antibody at dilution of 1:200



Immunofluorescence analysis of Mouse lung tissue using Phospho-CREB1 (Ser133) Polyclonal Antibody at dilution of 1:200

Preparation & Storage

Storage Store at -20°C. Avoid freeze / thaw cycles.

For Research Use Only

A Reliable Research Partner in Life Science and Medicine

Toll-free: 1-888-852-8623

Web: www.elabscience.com

Tel: 1-832-243-6086

Email: techsupport@elabscience.com

Fax: 1-832-243-6017

Phospho-CREB1 (Ser133) Polyclonal Antibody

Catalog Number: E-AB-20849

1 Publications



Background

This protein binds the cAMP response element (CRE), a sequence present in many viral and cellular promoters. CREB stimulates transcription on binding to the CRE. Transcription activation is enhanced by the TORC coactivators which act independently of Ser-133 phosphorylation. Implicated in synchronization of circadian rhythmicity.

For Research Use Only

A Reliable Research Partner in Life Science and Medicine

Toll-free: 1-888-852-8623

Tel: 1-832-243-6086

Fax: 1-832-243-6017

Web: www.elabscience.com

Email: techsupport@elabscience.com