

## MOB4 Polyclonal Antibody

**Catalog No.** E-AB-18424

**Note:** Centrifuge before opening to ensure complete recovery of vial contents.

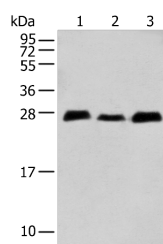
### Description

<b>Reactivity</b>	Human, Mouse, Rat
<b>Immunogen</b>	Full length fusion protein
<b>Host</b>	Rabbit
<b>Isotype</b>	IgG
<b>Purification</b>	Antigen affinity purification
<b>Conjugation</b>	Unconjugated
<b>Buffer</b>	PBS with 0.05% NaN <sub>3</sub> and 40% Glycerol, pH7.4

### Applications Recommended Dilution

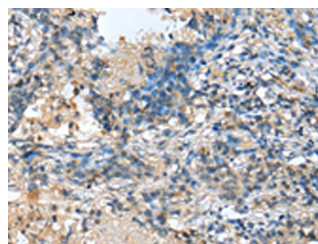
<b>WB</b>	1:500-1:2000
<b>IHC</b>	1:25-1:100

### Data

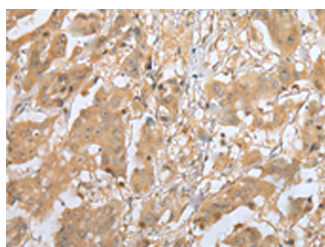


Western blot analysis of Human fetal brain tissue  
Human cerebrum tissue Mouse brain tissue using  
MOB4 Polyclonal Antibody at dilution of 1:400

**Observed Mw: Refer to figures**  
**Calculated Mw: 26 kDa**



Immunohistochemistry of paraffin-embedded  
Human lung cancer tissue using MOB4 Polyclonal  
Antibody at dilution of 1:25 (×200)



Immunohistochemistry of paraffin-embedded  
Human breast cancer tissue using MOB4 Polyclonal  
Antibody at dilution of 1:25 (×200)

### Preparation & Storage

### For Research Use Only

**Storage** Store at -20°C. Avoid freeze / thaw cycles.

## Background

This gene was identified based on its similarity with the mouse counterpart. Studies of the mouse counterpart suggest that the expression of this gene may be regulated during oocyte maturation and preimplantation following zygotic gene activation. Alternatively spliced transcript variants encoding distinct isoforms have been observed. Naturally occurring read-through transcription occurs between this locus and the neighboring locus HSPE1.

## For Research Use Only