

## BBOX1 Polyclonal Antibody

**Catalog No.** E-AB-18533

*Note:* Centrifuge before opening to ensure complete recovery of vial contents.

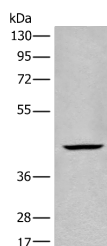
### Description

<b>Reactivity</b>	Human, Mouse, Rat
<b>Immunogen</b>	Fusion protein of human BBOX1
<b>Host</b>	Rabbit
<b>Isotype</b>	IgG
<b>Purification</b>	Antigen affinity purification
<b>Conjugation</b>	Unconjugated
<b>Buffer</b>	PBS with 0.05% NaN <sub>3</sub> and 40% Glycerol, pH7.4

### Applications Recommended Dilution

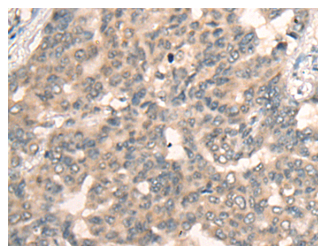
<b>WB</b>	1:500-1:2000
<b>IHC</b>	1:30-1:150

### Data



Western blot analysis of Human kidney tissue lysate using BBOX1 Polyclonal Antibody at dilution of 1:650

**Observed Mw: Refer to figures**  
**Calculated Mw: 45 kDa**



Immunohistochemistry of paraffin-embedded Human liver cancer tissue using BBOX1 Polyclonal Antibody at dilution of 1:45 (x200)

### Preparation & Storage

**Storage** Store at -20°C. Avoid freeze / thaw cycles.

### Background

This gene encodes gamma butyrobetaine hydroxylase which catalyzes the formation of L-carnitine from gamma-butyrobetaine, the last step in the L-carnitine biosynthetic pathway. Carnitine is essential for the transport of activated fatty acids across the mitochondrial membrane during mitochondrial beta-oxidation.

### For Research Use Only