

RTCB Polyclonal Antibody

Catalog No. E-AB-18570

Note: Centrifuge before opening to ensure complete recovery of vial contents.

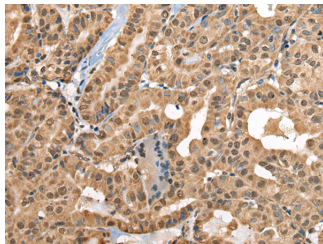
Description

| | |
|---------------------|---|
| Reactivity | Human, Mouse, Rat |
| Immunogen | Fusion protein of human RTCB |
| Host | Rabbit |
| Isotype | IgG |
| Purification | Antigen affinity purification |
| Conjugation | Unconjugated |
| Buffer | PBS with 0.05% NaN ₃ and 40% Glycerol, pH7.4 |

Applications Recommended Dilution

IHC 1:30-1:150,
ELISA
1:5000-1:10000

Data



Immunohistochemistry of paraffin-embedded Human thyroid cancer tissue using RTCB Polyclonal Antibody at dilution of 1:30(×200)

Preparation & Storage

Storage Store at -20°C. Avoid freeze / thaw cycles.

Background

Catalytic subunit of the tRNA-splicing ligase complex that acts by directly joining spliced tRNA halves to mature-sized tRNAs by incorporating the precursor-derived splice junction phosphate into the mature tRNA as a canonical 3',5'-phosphodiester. May act as an RNA ligase with broad substrate specificity, and may function toward other RNAs.

For Research Use Only