

## C3orf38 Polyclonal Antibody

Catalog No. E-AB-18571

**Note:** Centrifuge before opening to ensure complete recovery of vial contents.

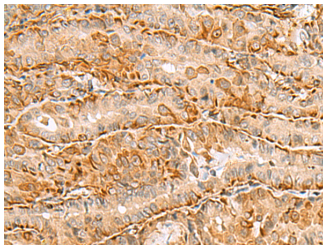
### Description

<b>Reactivity</b>	Human, Mouse, Rat
<b>Immunogen</b>	Fusion protein of human C3orf38
<b>Host</b>	Rabbit
<b>Isotype</b>	IgG
<b>Purification</b>	Antigen affinity purification
<b>Conjugation</b>	Unconjugated
<b>Buffer</b>	PBS with 0.05% NaN <sub>3</sub> and 40% Glycerol, pH7.4

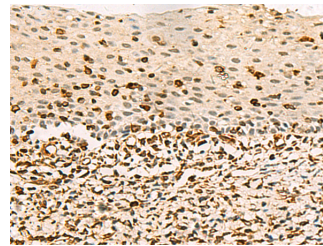
### Applications Recommended Dilution

**IHC** 1:100-1:300

### Data



Immunohistochemistry of paraffin-embedded Human thyroid cancer tissue using C3orf38 Polyclonal Antibody at dilution of 1:80 (x200)



Immunohistochemistry of paraffin-embedded Human cervical cancer tissue using C3orf38 Polyclonal Antibody at dilution of 1:80 (x200)

### Preparation & Storage

**Storage** Store at -20°C. Avoid freeze / thaw cycles.

### Background

May be involved in apoptosis regulation.

### For Research Use Only