

# C5AR1 Polyclonal Antibody

Catalog Number:E-AB-18573

**Note:** Centrifuge before opening to ensure complete recovery of vial contents.

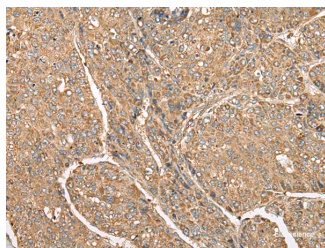
## Description

|                     |  |
|---------------------|--|
| <b>Reactivity</b>   | Human  |
| <b>Immunogen</b>    | Fusion protein of human C5AR1                          |
| <b>Host</b>         | Rabbit   |
| <b>Isotype</b>      | IgG  |
| <b>Purification</b> | Antigen affinity purification                          |
| <b>Conjugation</b>  | Unconjugated   |
| <b>Formulation</b>  | PBS with 0.05% NaN <sub>3</sub> and 40% Glycerol,pH7.4 |

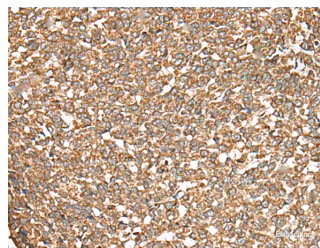
## Applications Recommended Dilution

|              |                |
|--------------|----------------|
| <b>IHC</b>   | 1:40-1:200     |
| <b>ELISA</b> | 1:5000-1:10000 |

## Data



Immunohistochemistry of paraffin-embedded Human liver cancer tissue using C5AR1 Polyclonal Antibody at dilution of 1:50(×200)



Immunohistochemistry of paraffin-embedded Human esophagus cancer tissue using C5AR1 Polyclonal Antibody at dilution of 1:50(×200)

## Preparation & Storage

**Storage** Store at -20°C. Avoid freeze / thaw cycles.

## Background

Receptor for the chemotactic and inflammatory peptide anaphylatoxin C5a (PubMed:1847994, PubMed:8182049, PubMed:7622471, PubMed:9553099, PubMed:10636859, PubMed:15153520). The ligand interacts with at least two sites on the receptor: a high-affinity site on the extracellular N-terminus, and a second site in the transmembrane region which activates downstream signaling events (PubMed:8182049, PubMed:7622471, PubMed:9553099). Receptor activation stimulates chemotaxis, granule enzyme release, intracellular calcium release and superoxide anion production (PubMed:10636859, PubMed:15153520).

## For Research Use Only

A Reliable Research Partner in Life Science and Medicine

Toll-free: 1-888-852-8623

Web: [www.elabscience.com](http://www.elabscience.com)

Tel: 1-832-243-6086

Email: [techsupport@elabscience.com](mailto:techsupport@elabscience.com)

Fax: 1-832-243-6017