

CD300E Polyclonal Antibody

Catalog No. E-AB-18592

Note: Centrifuge before opening to ensure complete recovery of vial contents.

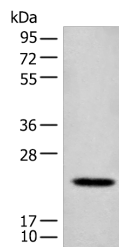
Description

Reactivity	Human, Mouse
Immunogen	Fusion protein of human CD300E
Host	Rabbit
Isotype	IgG
Purification	Antigen affinity purification
Conjugation	Unconjugated
Buffer	PBS with 0.05% NaN ₃ and 40% Glycerol,pH7.4

Applications Recommended Dilution

WB 1:500-1:2000

Data



Western blot analysis of Mouse lung tissue lysate using CD300E Polyclonal Antibody at dilution of 1:550

Observed Mw:Refer to figures
Calculated Mw:23 kDa

Preparation & Storage

Storage Store at -20°C. Avoid freeze / thaw cycles.

Background

CD300E (CD300e Molecule) is a Protein Coding gene. Diseases associated with CD300E include Tungiasis. Among its related pathways are Immunoregulatory interactions between a Lymphoid and a non-Lymphoid cell and Innate Immune System. An important paralog of this gene is CD300C.

For Research Use Only