

GK5 Polyclonal Antibody

Catalog Number:E-AB-18674



Note: Centrifuge before opening to ensure complete recovery of vial contents.

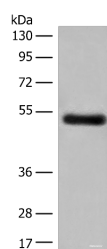
Description

Reactivity	Human
Immunogen	Full length fusion protein
Host	Rabbit
Isotype	IgG
Purification	Antigen affinity purification
Conjugation	Unconjugated
Formulation	PBS with 0.05% NaN ₃ and 40% Glycerol,pH7.4

Applications Recommended Dilution

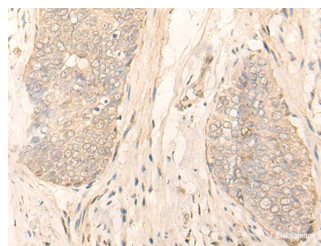
WB	1:500-1:2000
IHC	1:30-1:150
ELISA	1:5000-1:10000

Data



Western blot analysis of Human breast cancer tissue lysate using GK5 Polyclonal Antibody at dilution of 1:500

Observed Mw:Refer to figures
Calculated Mw:59 kDa



Immunohistochemistry of paraffin-embedded Human esophagus cancer tissue using GK5 Polyclonal Antibody at dilution of 1:35(×200)

Preparation & Storage

Storage Store at -20°C. Avoid freeze / thaw cycles.

Background

GK5(Putative glycerol kinase 5) is also named as ATP:glycerol 3-phosphotransferase 5 and belongs to the FGGY kinase family.It is involved in Glycerol metabolism and catalyzes the phosphorylation of glycerol by ATP, yielding ADP and glycerol-3-phosphate.It has 3 isoforms produced by alternative splicing with the MW of 59 kDa, 34 kDa and 28 kDa.

For Research Use Only

A Reliable Research Partner in Life Science and Medicine

Toll-free: 1-888-852-8623

Web: www.elabscience.com

Tel: 1-832-243-6086

Email: techsupport@elabscience.com

Fax: 1-832-243-6017