

## TUBG2 Polyclonal Antibody

**Catalog No.** E-AB-18724

*Note:* Centrifuge before opening to ensure complete recovery of vial contents.

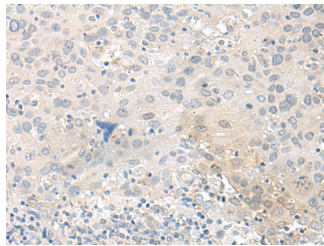
### Description

<b>Reactivity</b>	Human, Mouse
<b>Immunogen</b>	Fusion protein of human TUBG2
<b>Host</b>	Rabbit
<b>Isotype</b>	IgG
<b>Purification</b>	Antigen affinity purification
<b>Conjugation</b>	Unconjugated
<b>Buffer</b>	PBS with 0.05% NaN <sub>3</sub> and 40% Glycerol,pH7.4

### Applications Recommended Dilution

<b>IHC</b>	1:40-1:200
------------	------------

### Data



Immunohistochemistry of paraffin-embedded Human cervical cancer tissue using TUBG2 Polyclonal Antibody at dilution of 1:50(×200)

### Preparation & Storage

**Storage** Store at -20°C. Avoid freeze / thaw cycles.

### Background

TUBG2 (Tubulin Gamma 2) is a Protein Coding gene. Among its related pathways are Regulation of PLK1 Activity at G2/M Transition and Sertoli-Sertoli Cell Junction Dynamics. Gene Ontology (GO) annotations related to this gene include GTP binding and structural molecule activity. An important paralog of this gene is TUBG1.

### For Research Use Only