

RRP1 Polyclonal Antibody

Catalog No. E-AB-18726

Note: Centrifuge before opening to ensure complete recovery of vial contents.

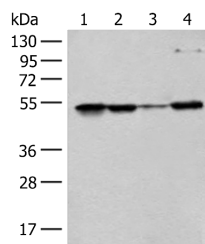
Description

Reactivity	Human
Immunogen	Fusion protein of human RRP1
Host	Rabbit
Isotype	IgG
Purification	Antigen affinity purification
Conjugation	Unconjugated
Buffer	PBS with 0.05% NaN ₃ and 40% Glycerol,pH7.4

Applications Recommended Dilution

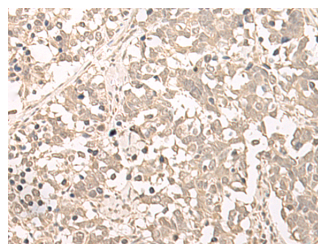
WB	1:500-1:2000
IHC	1:40-1:200

Data

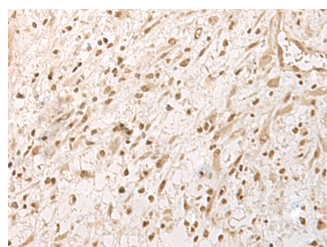


Western blot analysis of 293T Hela and HEPG2 cell lysates using RRP1 Polyclonal Antibody at dilution of 1:400

Observed Mw:Refer to figures
Calculated Mw:53 kDa



Immunohistochemistry of paraffin-embedded Human lung cancer tissue using RRP1 Polyclonal Antibody at dilution of 1:45(×200)



Immunohistochemistry of paraffin-embedded Human ovarian cancer tissue using RRP1 Polyclonal Antibody at dilution of 1:45(×200)

Preparation & Storage

For Research Use Only

Storage Store at -20°C. Avoid freeze / thaw cycles.

Background

The protein encoded by this gene is the putative homolog of the yeast ribosomal RNA processing protein RRP1. The encoded protein is involved in the late stages of nucleogenesis at the end of mitosis, and may be required for the generation of 28S rRNA.