

## MLLT6 Polyclonal Antibody

**Catalog No.** E-AB-18727

*Note:* Centrifuge before opening to ensure complete recovery of vial contents.

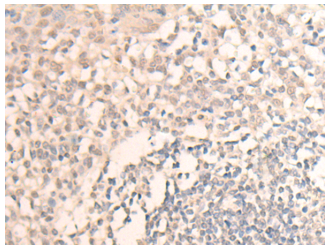
### Description

|                     |   |
|---------------------|---|
| <b>Reactivity</b>   | Human   |
| <b>Immunogen</b>    | Fusion protein of human MLLT6                           |
| <b>Host</b>         | Rabbit  |
| <b>Isotype</b>      | IgG   |
| <b>Purification</b> | Antigen affinity purification                           |
| <b>Conjugation</b>  | Unconjugated  |
| <b>Buffer</b>       | PBS with 0.05% NaN <sub>3</sub> and 40% Glycerol, pH7.4 |

### Applications Recommended Dilution

|            |            |
|------------|------------|
| <b>IHC</b> | 1:30-1:150 |
|------------|------------|

### Data



Immunohistochemistry of paraffin-embedded Human tonsil tissue using MLLT6 Polyclonal Antibody at dilution of 1:40(×200)

### Preparation & Storage

**Storage** Store at -20°C. Avoid freeze / thaw cycles.

### Background

AF17 was discovered as part of a genetic rearrangement in the MLL (mixed lineage leukemia) gene associated with acute myeloid leukemia. AF17 is also known as MLLT6.

### For Research Use Only