

KAT14 Polyclonal Antibody

Catalog No. E-AB-18740

Note: Centrifuge before opening to ensure complete recovery of vial contents.

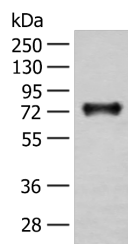
Description

Reactivity	Human, Mouse
Immunogen	Fusion protein of human KAT14
Host	Rabbit
Isotype	IgG
Purification	Antigen affinity purification
Conjugation	Unconjugated
Buffer	PBS with 0.05% NaN ₃ and 40% Glycerol,pH7.4

Applications Recommended Dilution

**WB 1:500-1:2000,
ELISA
1:5000-1:10000**

Data



Western blot analysis of Mouse brain tissue lysate
using KAT14 Polyclonal Antibody at dilution of 1:300

**Observed Mw:Refer to figures
Calculated Mw:89 kDa**

Preparation & Storage

Storage Store at -20°C. Avoid freeze / thaw cycles.

Background

CSRP2 is a protein containing two LIM domains, which are double zinc finger motifs found in proteins of diverse function. CSRP2 and some related proteins are thought to act as protein adapters, bridging two or more proteins to form a larger protein complex. The protein encoded by this gene binds to one of the LIM domains of CSRP2 and contains an acetyltransferase domain. Although the encoded protein has been detected in the cytoplasm, it is predominantly a nuclear protein. Alternatively spliced transcript variants have been described.

For Research Use Only