

SCMH1 Polyclonal Antibody

Catalog Number:E-AB-18741



Note: Centrifuge before opening to ensure complete recovery of vial contents.

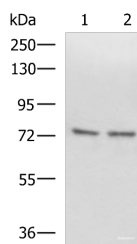
Description

Reactivity	Human, Mouse
Immunogen	Fusion protein of human SCMHI
Host	Rabbit
Isotype	IgG
Purification	Antigen affinity purification
Conjugation	Unconjugated
Formulation	PBS with 0.05% NaN ₃ and 40% Glycerol,pH7.4

Applications Recommended Dilution

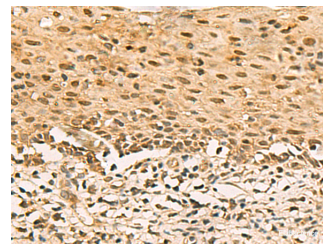
WB	1:500-1:2000
IHC	1:100-1:300
ELISA	1:5000-1:10000

Data



Western blot analysis of Raji and 231 cell lysates using SCMHI Polyclonal Antibody at dilution of 1:1000

Observed Mw:Refer to figures
Calculated Mw:73 kDa



Immunohistochemistry of paraffin-embedded Human cervical cancer tissue using SCMHI Polyclonal Antibody at dilution of 1:120(x200)

Preparation & Storage

Storage Store at -20°C. Avoid freeze / thaw cycles.

Background

Associates with Polycomb group (PcG) multiprotein complexes; the complex class is required to maintain the transcriptionally repressive state of some genes.

For Research Use Only

A Reliable Research Partner in Life Science and Medicine

Toll-free: 1-888-852-8623

Web: www.elabscience.com

Tel: 1-832-243-6086

Email: techsupport@elabscience.com

Fax: 1-832-243-6017