

## MIEN1 Polyclonal Antibody

Catalog No. E-AB-18767

**Note:** Centrifuge before opening to ensure complete recovery of vial contents.

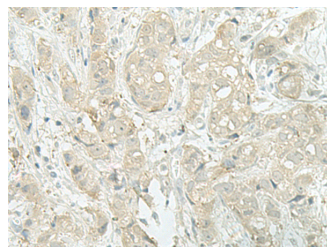
### Description

<b>Reactivity</b>	Human, Mouse
<b>Immunogen</b>	Fusion protein of human MIEN1
<b>Host</b>	Rabbit
<b>Isotype</b>	IgG
<b>Purification</b>	Antigen affinity purification
<b>Conjugation</b>	Unconjugated
<b>Buffer</b>	PBS with 0.05% NaN <sub>3</sub> and 40% Glycerol, pH7.4

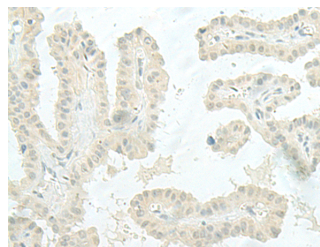
### Applications Recommended Dilution

**IHC** 1:30-1:150

### Data



Immunohistochemistry of paraffin-embedded Human breast cancer tissue using MIEN1 Polyclonal Antibody at dilution of 1:45(x200)



Immunohistochemistry of paraffin-embedded Human thyroid cancer tissue using MIEN1 Polyclonal Antibody at dilution of 1:45(x200)

### Preparation & Storage

**Storage** Store at -20°C. Avoid freeze / thaw cycles.

### Background

Increases cell migration by inducing filopodia formation at the leading edge of migrating cells. Plays a role in regulation of apoptosis, possibly through control of CASP3. May be involved in a redox-related process.

### For Research Use Only