

LSM10 Polyclonal Antibody

Catalog Number:E-AB-18768

Note: Centrifuge before opening to ensure complete recovery of vial contents.

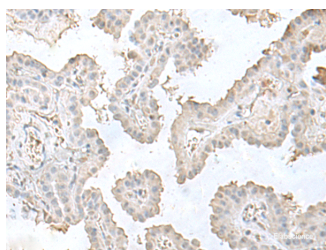
Description

Reactivity	Human, Mouse
Immunogen	Fusion protein of human LSM10
Host	Rabbit
Isotype	IgG
Purification	Antigen affinity purification
Conjugation	Unconjugated
Formulation	PBS with 0.05% NaN ₃ and 40% Glycerol,pH7.4

Applications Recommended Dilution

IHC	1:50-1:300
ELISA	1:5000-1:10000

Data



Immunohistochemistry of paraffin-embedded Human thyroid cancer tissue using LSM10 Polyclonal Antibody at dilution of 1:50(×200)

Preparation & Storage

Storage Store at -20°C. Avoid freeze / thaw cycles.

Background

LSm10 (U7 snRNA-associated Sm-like protein LSm10) is a nuclear protein that belongs to the snRNP (small nuclear ribonucleoproteins) Sm protein family. The survival of motor neurons (SMN) complex mediates the assembly of snRNPs involved in splicing and histone RNA processing. A crucial step in this process is the binding of Sm proteins onto the SMN protein. LSm10 and LSm11, mammalian homologs of the yeast Sm proteins D1 and D2, are important for U7 snRNP function and subcellular localization. U7 snRNP is an RNA molecule involved in the splicing of animal histone pre-mRNAs. Lsm10 and Lsm11 also associate with pICln (Chloride ion current inducer protein), which interacts with Sm proteins to inhibit their assembly on U RNA. LSm10 interactions with U7 snRNA and pICln may provide the means for using modified U7 snRNA derivatives to alter specific pre-mRNA splicing events, potentially leading to advances in antisense gene therapy.

For Research Use Only

A Reliable Research Partner in Life Science and Medicine

Toll-free: 1-888-852-8623

Web: www.elabscience.com

Tel: 1-832-243-6086

Email: techsupport@elabscience.com

Fax: 1-832-243-6017