

MRPL20 Polyclonal Antibody

Catalog No. E-AB-18777

Note: Centrifuge before opening to ensure complete recovery of vial contents.

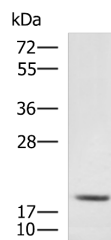
Description

Reactivity	Human, Mouse
Immunogen	Fusion protein of human MRPL20
Host	Rabbit
Isotype	IgG
Purification	Antigen affinity purification
Conjugation	Unconjugated
Buffer	PBS with 0.05% NaN ₃ and 40% Glycerol, pH7.4

Applications Recommended Dilution

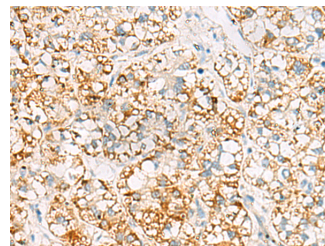
WB	1:500-1:2000
IHC	1:50-1:200

Data

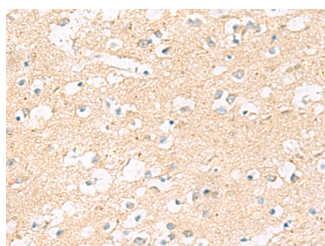


Western blot analysis of RAW264.7 cell lysate using MRPL20 Polyclonal Antibody at dilution of 1:900

Observed Mw: Refer to figures
Calculated Mw: 17 kDa



Immunohistochemistry of paraffin-embedded Human liver cancer tissue using MRPL20 Polyclonal Antibody at dilution of 1:60 (x200)



Immunohistochemistry of paraffin-embedded Human brain tissue using MRPL20 Polyclonal Antibody at dilution of 1:60 (x200)

Preparation & Storage

Storage Store at -20°C. Avoid freeze / thaw cycles.

For Research Use Only

Background

MRPL20 is one of more than 70 protein components of mitochondrial ribosomes that are encoded by the nuclear genome. MRPL20 is a subunit of the 39S mitochondrial ribosome. Mitochondrial ribosomes (mitoribosomes) consist of a small 28S subunit and a large 39S subunit. They have an estimated 75% protein to rRNA composition compared to prokaryotic ribosomes, where this ratio is reversed. Another difference between mammalian mitoribosomes and prokaryotic ribosomes is that the latter contain a 5S rRNA. Among different species, the proteins comprising the mitoribosome differ greatly in sequence, and sometimes in biochemical properties, which prevents easy recognition by sequence homology.