

## CLEC3B Polyclonal Antibody

Catalog No. E-AB-18795

**Note:** Centrifuge before opening to ensure complete recovery of vial contents.

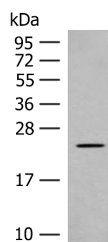
### Description

<b>Reactivity</b>	Human, Mouse, Rat
<b>Immunogen</b>	Fusion protein of human CLEC3B
<b>Host</b>	Rabbit
<b>Isotype</b>	IgG
<b>Purification</b>	Antigen affinity purification
<b>Conjugation</b>	Unconjugated
<b>Buffer</b>	PBS with 0.05% NaN <sub>3</sub> and 40% Glycerol, pH7.4

### Applications Recommended Dilution

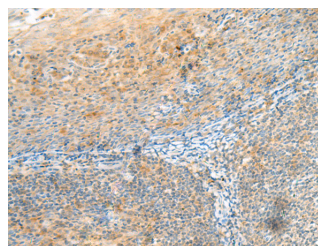
<b>WB</b>	1:500-1:2000
<b>IHC</b>	1:40-1:200

### Data



Western blot analysis of Rat heart tissue lysate using CLEC3B Polyclonal Antibody at dilution of 1:650

**Observed Mw: Refer to figures**  
**Calculated Mw: 23 kDa**



Immunohistochemistry of paraffin-embedded Human tonsil tissue using CLEC3B Polyclonal Antibody at dilution of 1:90 (x200)

### Preparation & Storage

**Storage** Store at -20°C. Avoid freeze / thaw cycles.

### Background

CLEC3B (C-Type Lectin Domain Family 3 Member B) is a Protein Coding gene. Among its related pathways are Response to elevated platelet cytosolic Ca<sup>2+</sup>. GO annotations related to this gene include calcium ion binding and heparin binding. An important paralog of this gene is CLEC3A.

### For Research Use Only