

CLEC3B Polyclonal Antibody

Catalog Number:E-AB-18795



Note: Centrifuge before opening to ensure complete recovery of vial contents.

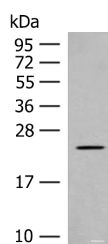
Description

Reactivity	Human, Mouse, Rat
Immunogen	Fusion protein of human CLEC3B
Host	Rabbit
Isotype	IgG
Purification	Antigen affinity purification
Conjugation	Unconjugated
Formulation	PBS with 0.05% NaN ₃ and 40% Glycerol,pH7.4

Applications Recommended Dilution

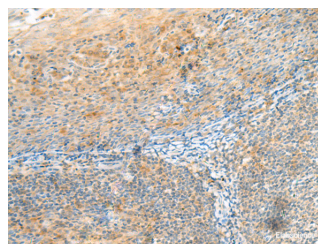
WB	1:500-1:2000
IHC	1:40-1:200
ELISA	1:5000-1:10000

Data



Western blot analysis of Rat heart tissue lysate using CLEC3B Polyclonal Antibody at dilution of 1:650

Observed Mw:Refer to figures
Calculated Mw:23 kDa



Immunohistochemistry of paraffin-embedded Human tonsil tissue using CLEC3B Polyclonal Antibody at dilution of 1:90(x200)

Preparation & Storage

Storage Store at -20°C. Avoid freeze / thaw cycles.

Background

CLEC3B (C-Type Lectin Domain Family 3 Member B) is a Protein Coding gene. Among its related pathways are Response to elevated platelet cytosolic Ca²⁺. GO annotations related to this gene include calcium ion binding and heparin binding. An important paralog of this gene is CLEC3A.

For Research Use Only

A Reliable Research Partner in Life Science and Medicine

Toll-free: 1-888-852-8623

Web: www.elabscience.com

Tel: 1-832-243-6086

Email: techsupport@elabscience.com

Fax: 1-832-243-6017