

Phospho-HSP27 (Ser15) Polyclonal Antibody

Catalog No. E-AB-20895

Note: Centrifuge before opening to ensure complete recovery of vial contents.

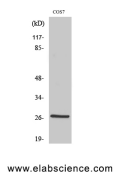
Description

Reactivity	Human,Monkey
Immunogen	Synthesized peptide derived from human HSP27 around the phosphorylation site of Ser15
Host	Rabbit
Isotype	IgG
Purification	Affinity purification
Conjugation	Unconjugated
Buffer	PBS with 0.02% sodium azide, 0.5% protective protein and 50% glycerol, pH7.4

Applications Recommended Dilution

WB	1:500-1:2000
IHC	1:100-1:300
ELISA	1:20000

Data



Western Blot analysis of COS7 cells with Phospho-HSP27 (Ser15) Polyclonal Antibody
Observed Mw:26kDa
Calculated Mw:23kDa

Preparation & Storage

Storage Store at -20°C. Avoid freeze / thaw cycles.

Background

Involved in stress resistance and actin organization.

For Research Use Only