

## PRPF3 Polyclonal Antibody

Catalog No. E-AB-18857

**Note:** Centrifuge before opening to ensure complete recovery of vial contents.

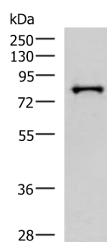
### Description

<b>Reactivity</b>	Human, Mouse
<b>Immunogen</b>	Fusion protein of human PRPF3
<b>Host</b>	Rabbit
<b>Isotype</b>	IgG
<b>Purification</b>	Antigen affinity purification
<b>Conjugation</b>	Unconjugated
<b>Buffer</b>	PBS with 0.05% NaN <sub>3</sub> and 40% Glycerol, pH7.4

### Applications Recommended Dilution

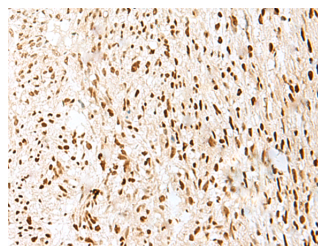
<b>WB</b>	1:1000-1:5000
<b>IHC</b>	1:30-1:150

### Data



Western blot analysis of HepG2 cell lysate using PRPF3 Polyclonal Antibody at dilution of 1:2000

**Observed Mw: Refer to figures**  
**Calculated Mw: 78 kDa**



Immunohistochemistry of paraffin-embedded Human liver cancer tissue using PRPF3 Polyclonal Antibody at dilution of 1:35 (×200)

### Preparation & Storage

**Storage** Store at -20°C. Avoid freeze / thaw cycles.

### Background

The removal of introns from nuclear pre-mRNAs occurs on complexes called spliceosomes, which are made up of 4 small nuclear ribonucleoprotein (snRNP) particles and an undefined number of transiently associated splicing factors. This gene product is one of several proteins that associate with U4 and U6 snRNPs. Mutations in this gene are associated with retinitis pigmentosa-18.

### For Research Use Only