

## MCCC1 Polyclonal Antibody

**Catalog No.** E-AB-18860

*Note:* Centrifuge before opening to ensure complete recovery of vial contents.

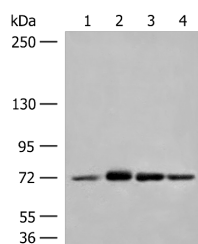
### Description

<b>Reactivity</b>	Human, Mouse
<b>Immunogen</b>	Fusion protein of human MCCC1
<b>Host</b>	Rabbit
<b>Isotype</b>	IgG
<b>Purification</b>	Antigen affinity purification
<b>Conjugation</b>	Unconjugated
<b>Buffer</b>	PBS with 0.05% NaN <sub>3</sub> and 40% Glycerol, pH7.4

### Applications Recommended Dilution

**WB 1:500-1:2000,**  
**ELISA**  
**1:5000-1:10000**

### Data



Western blot analysis of Jurkat cell Mouse heart tissue  
A172 HepG2 cell lysates using MCCC1 Polyclonal  
Antibody at dilution of 1:350  
**Observed Mw: Refer to figures**  
**Calculated Mw: 80 kDa**

### Preparation & Storage

**Storage** Store at -20°C. Avoid freeze / thaw cycles.

### Background

This gene encodes the large subunit of 3-methylcrotonyl-CoA carboxylase. This enzyme functions as a heterodimer and catalyzes the carboxylation of 3-methylcrotonyl-CoA to form 3-methylglutaconyl-CoA. Mutations in this gene are associated with 3-Methylcrotonylglycinuria, an autosomal recessive disorder of leucine catabolism.

### For Research Use Only