

EFTUD2 Polyclonal Antibody

Catalog No. E-AB-18874

Note: Centrifuge before opening to ensure complete recovery of vial contents.

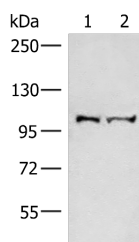
Description

Reactivity	Human, Mouse
Immunogen	Fusion protein of human EFTUD2
Host	Rabbit
Isotype	IgG
Purification	Antigen affinity purification
Conjugation	Unconjugated
Buffer	PBS with 0.05% NaN ₃ and 40% Glycerol, pH7.4

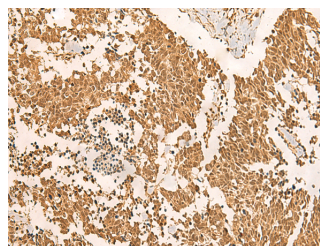
Applications Recommended Dilution

WB	1:500-1:2000
IHC	1:50-1:300

Data



Western blot analysis of Mouse brain tissue and Jurkat cell lysates using EFTUD2 Polyclonal Antibody at dilution of 1:550
Observed Mw: Refer to figures
Calculated Mw: 109 kDa



Immunohistochemistry of paraffin-embedded Human lung cancer tissue using EFTUD2 Polyclonal Antibody at dilution of 1:45 (×200)

Preparation & Storage

Storage Store at -20°C. Avoid freeze / thaw cycles.

Background

This gene encodes a GTPase which is a component of the spliceosome complex which processes precursor mRNAs to produce mature mRNAs. Mutations in this gene are associated with mandibulofacial dysostosis with microcephaly. Multiple transcript variants encoding different isoforms have been found for this gene.

For Research Use Only