

## GOLGA7 Polyclonal Antibody

**Catalog No.** E-AB-18893

*Note:* Centrifuge before opening to ensure complete recovery of vial contents.

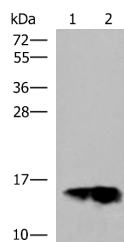
### Description

<b>Reactivity</b>	Human, Mouse, Rat
<b>Immunogen</b>	Fusion protein of human GOLGA7
<b>Host</b>	Rabbit
<b>Isotype</b>	IgG
<b>Purification</b>	Antigen affinity purification
<b>Conjugation</b>	Unconjugated
<b>Buffer</b>	PBS with 0.05% NaN <sub>3</sub> and 40% Glycerol, pH7.4

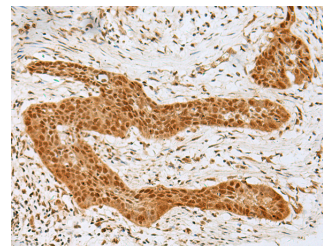
### Applications Recommended Dilution

<b>WB</b>	1:1000-1:5000
<b>IHC</b>	1:50-1:300

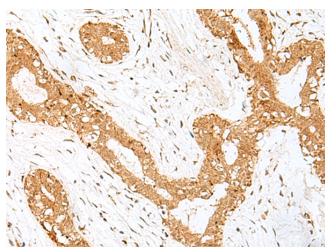
### Data



Western blot analysis of Human plasma solution and Human placenta tissue lysates using GOLGA7 Polyclonal Antibody at dilution of 1:600  
**Observed Mw: Refer to figures**  
**Calculated Mw: 16 kDa**



Immunohistochemistry of paraffin-embedded Human esophagus cancer tissue using GOLGA7 Polyclonal Antibody at dilution of 1:40(×200)



Immunohistochemistry of paraffin-embedded Human breast cancer tissue using GOLGA7 Polyclonal Antibody at dilution of 1:40(×200)

### Preparation & Storage

#### For Research Use Only

**Storage** Store at -20°C. Avoid freeze / thaw cycles.

## Background

GOLGA7 (Golgin A7) is a Protein Coding gene. Among its related pathways are Innate Immune System. An important paralog of this gene is GOLGA7B.