

## HBE1 Polyclonal Antibody

Catalog No. E-AB-18898

**Note:** Centrifuge before opening to ensure complete recovery of vial contents.

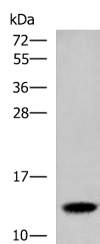
### Description

<b>Reactivity</b>	Human
<b>Immunogen</b>	Fusion protein of human HBE1
<b>Host</b>	Rabbit
<b>Isotype</b>	IgG
<b>Purification</b>	Antigen affinity purification
<b>Conjugation</b>	Unconjugated
<b>Buffer</b>	PBS with 0.05% NaN <sub>3</sub> and 40% Glycerol,pH7.4

### Applications Recommended Dilution

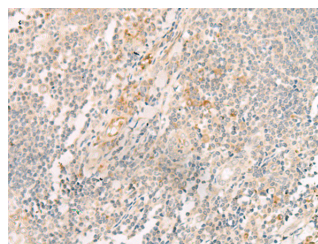
<b>WB</b>	1:500-1:2000
<b>IHC</b>	1:30-1:150

### Data



Western blot analysis of Human placenta tissue lysate using HBE1 Polyclonal Antibody at dilution of 1:300

**Observed Mw:Refer to figures**  
**Calculated Mw:16 kDa**



Immunohistochemistry of paraffin-embedded Human tonsil tissue using HBE1 Polyclonal Antibody at dilution of 1:30(x200)

### Preparation & Storage

**Storage** Store at -20°C. Avoid freeze / thaw cycles.

### Background

The hemoglobin molecule is a tetramer consisting of two  $\alpha$ -globin-like polypeptide chains and two  $\beta$ -globin-like chains. The human hemoglobin genes are expressed in a tightly developmentally controlled fashion.  $\epsilon$ -globin (HBE1) is the predominantly expressed gene during the embryonic stage. The epsilon hemoglobin chain seems to be the best marker for fetal nucleated red blood cells (NRBCs). Anti-HBE1 may be used to label and isolate fetal cells from maternal blood and can be useful in prenatal diagnosis. This antibody specifically recognizes the HBE1 and doesn't cross-react with other globin chains.

### For Research Use Only