

EEF1AKMT2 Polyclonal Antibody

Catalog No. E-AB-18929

Note: Centrifuge before opening to ensure complete recovery of vial contents.

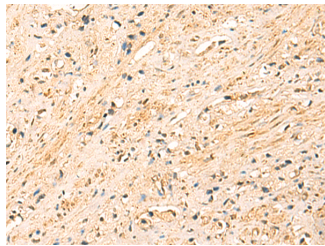
Description

Reactivity	Human, Mouse
Immunogen	Fusion protein of human EEF1AKMT2
Host	Rabbit
Isotype	IgG
Purification	Antigen affinity purification
Conjugation	Unconjugated
Buffer	PBS with 0.05% NaN ₃ and 40% Glycerol, pH7.4

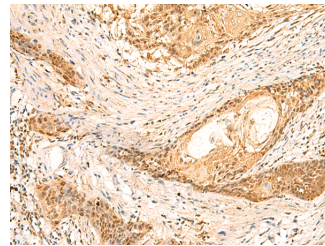
Applications Recommended Dilution

IHC 1:50-1:300

Data



Immunohistochemistry of paraffin-embedded Human prost at e cancer tissue using EEF1AKMT2 Polyclonal Antibody at dilution of 1:50(×200)



Immunohistochemistry of paraffin-embedded Human esophagus cancer tissue using EEF1AKMT2 Polyclonal Antibody at dilution of 1:50(×200)

Preparation & Storage

Storage Store at -20°C. Avoid freeze / thaw cycles.

Background

Protein-lysine methyltransferase that selectively catalyzes the trimethylation of EEF1A at 'Lys-318'.

For Research Use Only