

SEC22B Polyclonal Antibody

Catalog No. E-AB-18942

Note: Centrifuge before opening to ensure complete recovery of vial contents.

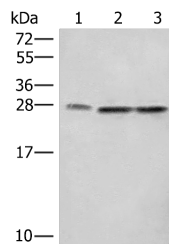
Description

| | |
|---------------------|---|
| Reactivity | Human, Mouse, Rat |
| Immunogen | Fusion protein of human SEC22B |
| Host | Rabbit |
| Isotype | IgG |
| Purification | Antigen affinity purification |
| Conjugation | Unconjugated |
| Buffer | PBS with 0.05% NaN ₃ and 40% Glycerol, pH7.4 |

Applications Recommended Dilution

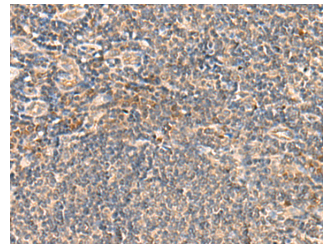
| | |
|------------|--------------|
| WB | 1:500-1:2000 |
| IHC | 1:50-1:300 |

Data



Western blot analysis of A172 LOVO and HeLa cell lysates using SEC22B Polyclonal Antibody at dilution of 1:450

Observed Mw: Refer to figures
Calculated Mw: 25 kDa



Immunohistochemistry of paraffin-embedded Human tonsil tissue using SEC22B Polyclonal Antibody at dilution of 1:60 (×200)

Preparation & Storage

Storage Store at -20°C. Avoid freeze / thaw cycles.

Background

The protein encoded by this gene is a member of the SEC22 family of vesicle trafficking proteins. It seems to complex with SNARE and it is thought to play a role in the ER-Golgi protein trafficking. This protein has strong similarity to Mus musculus and Cricetus griseus proteins. SEC22B (SEC22 Homolog B, Vesicle Trafficking Protein (Gene/Pseudogene)) is a Protein Coding gene. Among its related pathways are Transport to the Golgi and subsequent modification and Innate Immune System. GO annotations related to this gene include syntaxin binding. An important paralog of this gene is SEC22A.

For Research Use Only