

DCAF10 Polyclonal Antibody

Catalog No. E-AB-18947

Note: Centrifuge before opening to ensure complete recovery of vial contents.

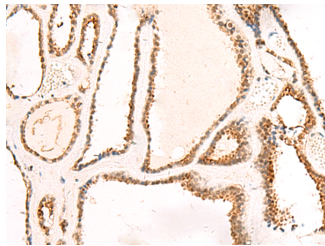
Description

Reactivity	Human, Mouse
Immunogen	Fusion protein of human DCAF10
Host	Rabbit
Isotype	IgG
Purification	Antigen affinity purification
Conjugation	Unconjugated
Buffer	PBS with 0.05% NaN ₃ and 40% Glycerol, pH7.4

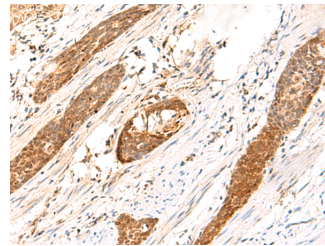
Applications Recommended Dilution

IHC 1:50-1:300

Data



Immunohistochemistry of paraffin-embedded Human thyroid cancer tissue using DCAF10 Polyclonal Antibody at dilution of 1:130(×200)



Immunohistochemistry of paraffin-embedded Human esophagus cancer tissue using DCAF10 Polyclonal Antibody at dilution of 1:130(×200)

Preparation & Storage

Storage Store at -20°C. Avoid freeze / thaw cycles.

Background

May function as a substrate receptor for CUL4-DDB1 E3 ubiquitin-protein ligase complex.

For Research Use Only