

## ATP5PD Polyclonal Antibody

**Catalog No.** E-AB-18971

*Note:* Centrifuge before opening to ensure complete recovery of vial contents.

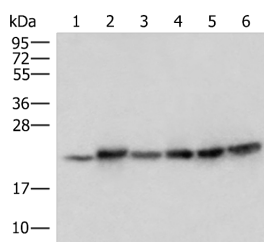
### Description

<b>Reactivity</b>	Human, Mouse
<b>Immunogen</b>	Fusion protein of human ATP5PD
<b>Host</b>	Rabbit
<b>Isotype</b>	IgG
<b>Purification</b>	Antigen affinity purification
<b>Conjugation</b>	Unconjugated
<b>Buffer</b>	PBS with 0.05% NaN <sub>3</sub> and 40% Glycerol,pH7.4

### Applications Recommended Dilution

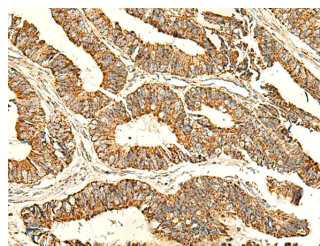
<b>WB</b>	1:500-1:2000
<b>IHC</b>	1:50-1:300

### Data

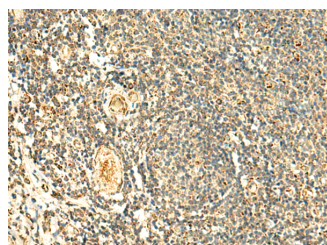


Western blot analysis of Mouse skeletal muscle tissue, Mouse kidney tissue, PC-3, Jurkat, HepG2, and HeLa cell lysates using ATP5PD Polyclonal Antibody at dilution of 1:300.

**Observed Mw: Refer to figures**  
**Calculated Mw: 18 kDa**



Immunohistochemistry of paraffin-embedded Human colorectal cancer tissue using ATP5PD Polyclonal Antibody at dilution of 1:50 (×200).



Immunohistochemistry of paraffin-embedded Human tonsil tissue using ATP5PD Polyclonal Antibody at dilution of 1:50 (×200).

### Preparation & Storage

#### For Research Use Only

**Storage** Store at -20°C. Avoid freeze / thaw cycles.

## Background

Mitochondrial ATP synthase catalyzes ATP synthesis, utilizing an electrochemical gradient of protons across the inner membrane during oxidative phosphorylation. It is composed of two linked multi-subunit complexes: the soluble catalytic core, F1, and the membrane-spanning component, Fo, which comprises the proton channel. The F1 complex consists of 5 different subunits (alpha, beta, gamma, delta, and epsilon) assembled in a ratio of 3 alpha, 3 beta, and a single representative of the other 3. The Fo seems to have nine subunits (a, b, c, d, e, f, g, F6 and 8). This gene encodes the d subunit of the Fo complex. Alternatively spliced transcript variants encoding different isoforms have been identified for this gene. In addition, three pseudogenes are located on chromosomes 9, 12 and 15.

## For Research Use Only