

Phospho-IκB alpha (Ser32/S36) Polyclonal Antibody

Catalog No. E-AB-20911

Note: Centrifuge before opening to ensure complete recovery of vial contents.

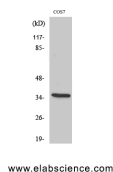
Description

Reactivity	Human, Mouse, Rat, Monkey
Immunogen	Synthesized peptide derived from human IκB-α around the phosphorylation site of Ser32/36
Host	Rabbit
Isotype	IgG
Purification	Affinity purification
Conjugation	Unconjugated
Buffer	PBS with 0.02% sodium azide, 0.5% protective protein and 50% glycerol, pH7.4

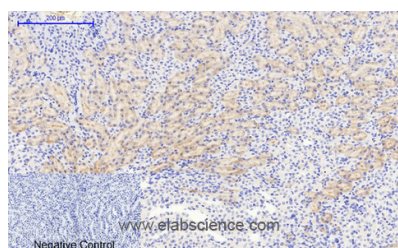
Applications Recommended Dilution

WB	1:500-1:2000
IHC	1:100-1:300
IF	1:200-1:1000

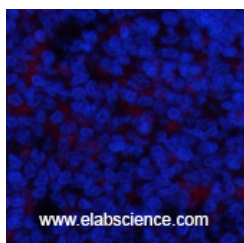
Data



Western Blot analysis of COS-7 cells with Phospho-IκB alpha (Ser32/S36) Polyclonal Antibody
Observed Mw:34kDa
Calculated Mw:36kDa



Immunohistochemistry of paraffin-embedded Mouse kidney tissue using Phospho-IκB alpha (Ser32/S36) Polyclonal Antibody at dilution of 1:200



Immunofluorescence analysis of Rat spleen tissue using Phospho-IκB alpha (Ser32/S36) Polyclonal Antibody at dilution of 1:200

For Research Use Only

Preparation & Storage

Storage Store at -20°C. Avoid freeze / thaw cycles.

Background

Inhibits the activity of dimeric NF-kappa-B/REL complexes by trapping REL dimers in the cytoplasm through masking of their nuclear localization signals. On cellular stimulation by immune and proinflammatory responses, becomes phosphorylated promoting ubiquitination and degradation, enabling the dimeric RELA to translocate to the nucleus and activate transcription.

For Research Use Only