

# Phospho-IkB alpha (Ser32/S36) Polyclonal Antibody

Catalog Number:E-AB-20911

7 Publications



**Note:** Centrifuge before opening to ensure complete recovery of vial contents.

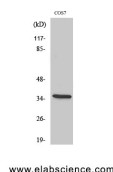
## Description

<b>Reactivity</b>	Human,Mouse,Rat,Monkey
<b>Immunogen</b>	Synthesized peptide derived from human IkB- $\alpha$ around the phosphorylation site of Ser32/36
<b>Host</b>	Rabbit
<b>Isotype</b>	IgG
<b>Purification</b>	Affinity purification
<b>Conjugation</b>	Unconjugated
<b>Formulation</b>	PBS with 0.02% sodium azide, 0.5% protective protein and 50% glycerol, pH7.4

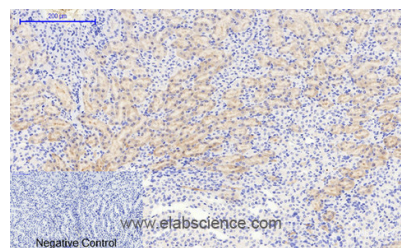
## Applications Recommended Dilution

<b>WB</b>	1:500-1:2000
<b>IHC</b>	1:100-1:300
<b>IF</b>	1:200-1:1000
<b>ELISA</b>	1:10000

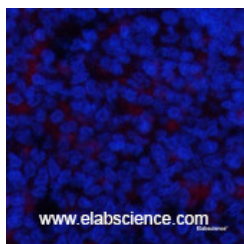
## Data



Western Blot analysis of COS-7 cells with Phospho-IkB alpha (Ser32/S36) Polyclonal Antibody  
**Observed Mw:34kDa**  
**Calculated Mw:36kDa**



Immunohistochemistry of paraffin-embedded Mouse kidney tissue using Phospho-IkB alpha (Ser32/S36) Polyclonal Antibody at dilution of 1:200



Immunofluorescence analysis of Rat spleen tissue using Phospho-IkB alpha (Ser32/S36) Polyclonal Antibody at dilution of 1:200

## Preparation & Storage

**Storage** Store at -20°C. Avoid freeze / thaw cycles.

## For Research Use Only

A Reliable Research Partner in Life Science and Medicine

Toll-free: 1-888-852-8623

Web: [www.elabscience.com](http://www.elabscience.com)

Tel: 1-832-243-6086

Email: [techsupport@elabscience.com](mailto:techsupport@elabscience.com)

Fax: 1-832-243-6017

# Phospho-IkB alpha (Ser32/S36) Polyclonal Antibody

Catalog Number: E-AB-20911

7 Publications



## Background

Inhibits the activity of dimeric NF-kappa-B/REL complexes by trapping REL dimers in the cytoplasm through masking of their nuclear localization signals. On cellular stimulation by immune and proinflammatory responses, becomes phosphorylated promoting ubiquitination and degradation, enabling the dimeric RELA to translocate to the nucleus and activate transcription.

## For Research Use Only

A Reliable Research Partner in Life Science and Medicine

Toll-free: 1-888-852-8623

Web: [www.elabscience.com](http://www.elabscience.com)

Tel: 1-832-243-6086

Email: [techsupport@elabscience.com](mailto:techsupport@elabscience.com)

Fax: 1-832-243-6017