

## SAMSN1 Polyclonal Antibody

**Catalog No.** E-AB-19005

*Note:* Centrifuge before opening to ensure complete recovery of vial contents.

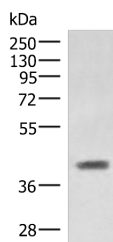
### Description

<b>Reactivity</b>	Human, Mouse
<b>Immunogen</b>	Fusion protein of human SAMSN1
<b>Host</b>	Rabbit
<b>Isotype</b>	IgG
<b>Purification</b>	Antigen affinity purification
<b>Conjugation</b>	Unconjugated
<b>Buffer</b>	PBS with 0.05% NaN <sub>3</sub> and 40% Glycerol, pH7.4

### Applications Recommended Dilution

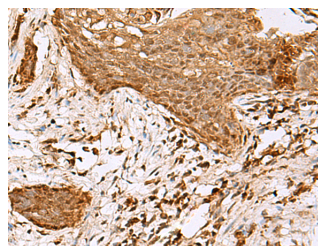
<b>WB</b>	1:1000-1:5000
<b>IHC</b>	1:50-1:300

### Data



Western blot analysis of Mouse liver tissue lysate using SAMSN1 Polyclonal Antibody at dilution of 1:1000

**Observed Mw: Refer to figures**  
**Calculated Mw: 42 kDa**



Immunohistochemistry of paraffin-embedded Human esophagus cancer tissue using SAMSN1 Polyclonal Antibody at dilution of 1:80 (×200)

### Preparation & Storage

**Storage** Store at -20°C. Avoid freeze / thaw cycles.

### Background

SAMSN1 is a member of a novel gene family of putative adaptors and scaffold proteins containing SH3 and SAM (sterile alpha motif) domains (Claudio et al., 2001 [PubMed 11536050]).

### For Research Use Only