

## LDHAL6B Polyclonal Antibody

**Catalog No.** E-AB-19011

*Note:* Centrifuge before opening to ensure complete recovery of vial contents.

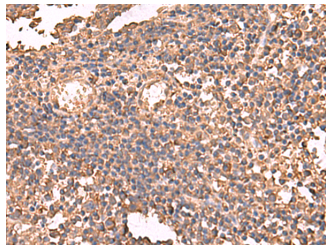
### Description

<b>Reactivity</b>	Human
<b>Immunogen</b>	Fusion protein of human LDHAL6B
<b>Host</b>	Rabbit
<b>Isotype</b>	IgG
<b>Purification</b>	Antigen affinity purification
<b>Conjugation</b>	Unconjugated
<b>Buffer</b>	PBS with 0.05% NaN <sub>3</sub> and 40% Glycerol,pH7.4

### Applications Recommended Dilution

**IHC** 1:50-1:300

### Data



Immunohistochemistry of paraffin-embedded Human tonsil tissue using LDHAL6B Polyclonal Antibody at dilution of 1:65(×200)

### Preparation & Storage

**Storage** Store at -20°C. Avoid freeze / thaw cycles.

### Background

LDHAL6B belongs to the LDH/MDH superfamily. LDH family. The specific function of the protein remains unknown.

### For Research Use Only