

Phospho-JAK1 (Tyr1022) Polyclonal Antibody

Catalog Number: E-AB-20913

2 Publications



Note: Centrifuge before opening to ensure complete recovery of vial contents.

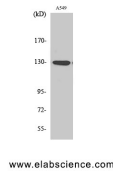
Description

Reactivity	Human, Mouse, Rat
Immunogen	Synthesized peptide derived from human JAK1 around the phosphorylation site of Tyr1022
Host	Rabbit
Isotype	IgG
Purification	Affinity purification
Conjugation	Unconjugated
Formulation	PBS with 0.02% sodium azide, 0.5% protective protein and 50% glycerol, pH7.4

Applications Recommended Dilution

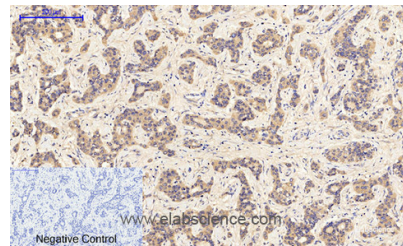
WB	1:500-1:2000
IHC	1:100-1:300
IF	1:50-1:200
ELISA	1:10000

Data

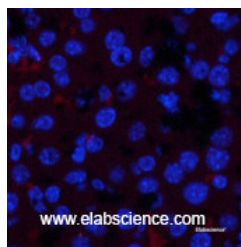


Western Blot analysis of A549 cells with Phospho-JAK1 (Tyr1022) Polyclonal Antibody at dilution of 1:500

Observed Mw: 132kDa
Calculated Mw: 132kDa



Immunohistochemistry of paraffin-embedded Human liver cancer tissue with Phospho-JAK1 (Tyr1022) Polyclonal Antibody at dilution of 1:200



Immunofluorescence analysis of Mouse liver tissue with Phospho-JAK1 (Tyr1022) Polyclonal Antibody at dilution of 1:200

Preparation & Storage

Storage Store at -20°C. Avoid freeze / thaw cycles.

For Research Use Only

A Reliable Research Partner in Life Science and Medicine

Toll-free: 1-888-852-8623

Web: www.elabscience.com

Tel: 1-832-243-6086

Email: techsupport@elabscience.com

Fax: 1-832-243-6017

Phospho-JAK1 (Tyr1022) Polyclonal Antibody

Catalog Number: E-AB-20913

2 Publications



Background

Tyrosine kinase of the non-receptor type, involved in the IFN-alpha/beta/gamma signal pathway. Kinase partner for the interleukin (IL)-2 receptor.

For Research Use Only

A Reliable Research Partner in Life Science and Medicine

Toll-free: 1-888-852-8623

Tel: 1-832-243-6086

Fax: 1-832-243-6017

Web: www.elabscience.com

Email: techsupport@elabscience.com