

SMPD2 Polyclonal Antibody

Catalog Number: E-AB-19030

1 Publications



Note: Centrifuge before opening to ensure complete recovery of vial contents.

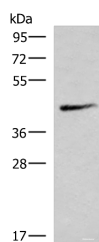
Description

Reactivity	Human, Mouse, Rat
Immunogen	Fusion protein of human SMPD2
Host	Rabbit
Isotype	IgG
Purification	Antigen affinity purification
Conjugation	Unconjugated
Formulation	PBS with 0.05% NaN3 and 40% Glycerol, pH7.4

Applications Recommended Dilution

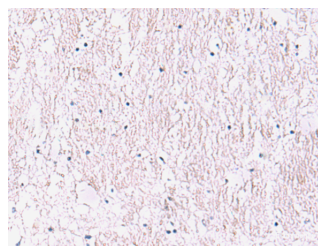
WB	1:1000-1:5000
IHC	1:50-1:300
ELISA	1:5000-1:10000

Data



Western blot analysis of Mouse lung tissue lysate using SMPD2 Polyclonal Antibody at dilution of 1:1000

Observed Mw: Refer to figures
Calculated Mw: 48 kDa



Immunohistochemistry of paraffin-embedded Human brain tissue using SMPD2 Polyclonal Antibody at dilution of 1:90 (x200)

Preparation & Storage

Storage Store at -20°C. Avoid freeze / thaw cycles.

Background

This gene encodes a protein which was initially identified as a sphingomyelinase based on sequence similarity between bacterial sphingomyelinases and a yeast protein. Subsequent studies showed that its biological function is less likely to be as a sphingomyelinase and instead as a lysophospholipase.

For Research Use Only

A Reliable Research Partner in Life Science and Medicine

Toll-free: 1-888-852-8623

Web: www.elabscience.com

Tel: 1-832-243-6086

Email: techsupport@elabscience.com

Fax: 1-832-243-6017