

COPS3 Polyclonal Antibody

Catalog No. E-AB-19031

Note: Centrifuge before opening to ensure complete recovery of vial contents.

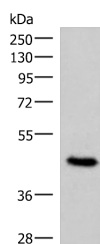
Description

Reactivity	Human, Mouse, Rat
Immunogen	Fusion protein of human COPS3
Host	Rabbit
Isotype	IgG
Purification	Antigen affinity purification
Conjugation	Unconjugated
Buffer	PBS with 0.05% NaN ₃ and 40% Glycerol, pH7.4

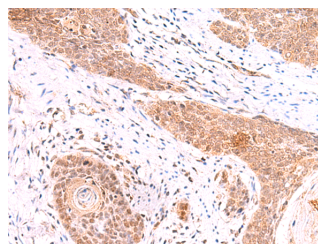
Applications Recommended Dilution

WB	1:500-1:2000
IHC	1:50-1:300

Data



Western blot analysis of 293T cell lysate using COPS3 Polyclonal Antibody at dilution of 1:450
Observed Mw: Refer to figures
Calculated Mw: 48 kDa



Immunohistochemistry of paraffin-embedded Human esophagus cancer tissue using COPS3 Polyclonal Antibody at dilution of 1:60(×200)

Preparation & Storage

Storage Store at -20°C. Avoid freeze / thaw cycles.

Background

The protein encoded by this gene possesses kinase activity that phosphorylates regulators involved in signal transduction. It phosphorylates I kappa-Balpa, p105, and c-Jun. It acts as a docking site for complex-mediated phosphorylation. The gene is located within the Smith-Magenis syndrome region on chromosome 17. Several transcript variants encoding different isoforms have been found for this gene.

For Research Use Only