

RPS6KA5 Polyclonal Antibody

Catalog Number:E-AB-19071



Note: Centrifuge before opening to ensure complete recovery of vial contents.

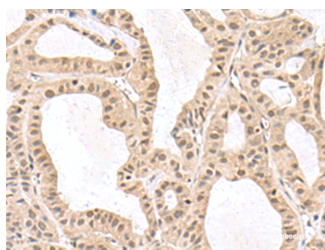
Description

| | |
|---------------------|--------------------------------------------------------|
| Reactivity | Human |
| Immunogen | Fusion protein of human RPS6KA5 |
| Host | Rabbit |
| Isotype | IgG |
| Purification | Antigen affinity purification |
| Conjugation | Unconjugated |
| Formulation | PBS with 0.05% NaN ₃ and 40% Glycerol,pH7.4 |

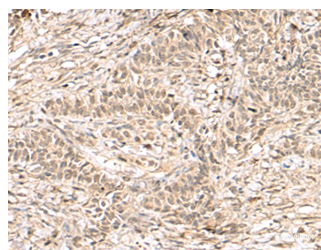
Applications Recommended Dilution

| | |
|--------------|----------------|
| IHC | 1:200-1:300 |
| ELISA | 1:5000-1:10000 |

Data



Immunohistochemistry of paraffin-embedded Human thyroid cancer tissue using RPS6KA5 Polyclonal Antibody at dilution of 1:170(×200)



Immunohistochemistry of paraffin-embedded Human ovarian cancer tissue using RPS6KA5 Polyclonal Antibody at dilution of 1:170(×200)

Preparation & Storage

Storage Store at -20°C. Avoid freeze / thaw cycles.

Background

RPS6KA5 (Ribosomal Protein S6 Kinase A5) is a Protein Coding gene. Among its related pathways are ERK Signaling and L1CAM interactions. Gene Ontology (GO) annotations related to this gene include transferase activity, transferring phosphorus-containing groups and protein tyrosine kinase activity. An important paralog of this gene is RPS6KA4.

For Research Use Only

A Reliable Research Partner in Life Science and Medicine

Toll-free: 1-888-852-8623

Web: www.elabscience.com

Tel: 1-832-243-6086

Email: techsupport@elabscience.com

Fax: 1-832-243-6017