

GSTCD Polyclonal Antibody

Catalog No. E-AB-19080

Note: Centrifuge before opening to ensure complete recovery of vial contents.

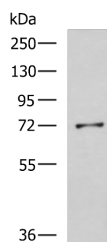
Description

Reactivity	Human
Immunogen	Fusion protein of human GSTCD
Host	Rabbit
Isotype	IgG
Purification	Antigen affinity purification
Conjugation	Unconjugated
Buffer	PBS with 0.05% NaN ₃ and 40% Glycerol,pH7.4

Applications Recommended Dilution

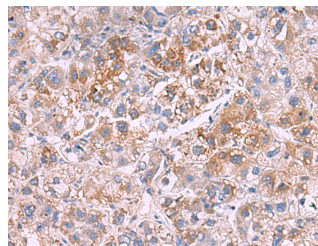
WB	1:500-1:2000
IHC	1:70-1:350

Data



Western blot analysis of K562 cell lysate using GSTCD Polyclonal Antibody at dilution of 1:800

Observed Mw:Refer to figures
Calculated Mw:71 kDa



Immunohistochemistry of paraffin-embedded Human liver cancer tissue using GSTCD Polyclonal Antibody at dilution of 1:70(×200)

Preparation & Storage

Storage Store at -20°C. Avoid freeze / thaw cycles.

Background

GSTCD (Glutathione S-Transferase C-Terminal Domain Containing) is a Protein Coding gene. Among its related pathways are Cytochrome P450 - arranged by substrate type. Gene Ontology (GO) annotations related to this gene include methyltransferase activity and rRNA methyltransferase activity.

For Research Use Only